

# Current Building Challenges

- Existing building is nearly 55 years old and near the end of its design life.
- Incidents of failing pieces of concrete, dilapidation, leaking roof, electrical failure and basement flooding are more commonplace.
- No wheelchair/ barrier free access into the church.
- No passenger elevator.
- Insufficient classrooms to meet ministry needs, requiring rental space outside church.
- Inadequate number of toilets; handicap toilets.
- Inadequate space for church offices.
- Auditorium: insufficient seating; poor acoustics, audio, and video capability.
- Easy penetration of traffic noise from Junction Road.
- Basement has temporary classrooms with poor facilities, seating, and acoustics.
- No fellowship space available.
- Basement is in bad condition because of humidity and water seepage issues.
- Limited central air-conditioning and no heating provision.
- No large kitchen, no drink dispensers, no water fountains.
- Numerous issues with children' areas.

Our current building has served its life span and limits ministry to every generation! Our calling to be a durable, permanent, accessible church for future generations compels us to respond in building a new ministry tool – for us, for others, for everyone – to know Jesus!

# New Building Solutions

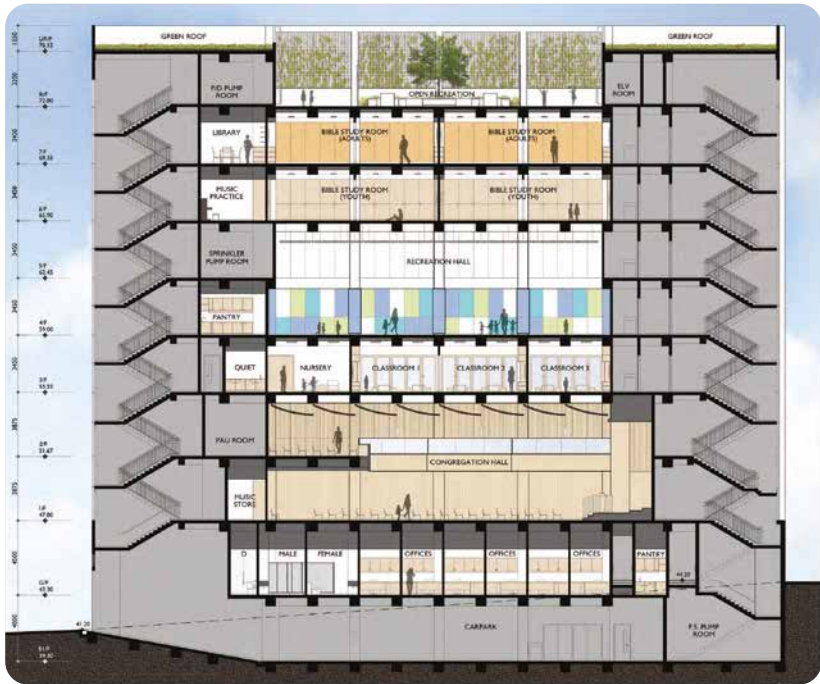
- Welcomes everyone with a beautifully stunning building that will stand out as a witness to Jesus as the true path to heaven, to salvation, to hope, to purpose.
- Expands ministry opportunities by providing triple the floor area.
- Creates room for more people by building 8 stories, including basement.
- Inspires worship with a modern multifunction sanctuary design with seating for over 460 per service.
- Builds connection and friendships with a dedicated multi-purpose hall for fellowship and recreation.
- Improves accessibility with a fire-rated passenger lift to all floors.
- Allows barrier free access with a wheelchair ramp and handicap toilets.
- Allows safe bus transfer for kindergarten children from inside the basement allowing protection from traffic and weather.
- Provides adequate toilets on six floors.
- Provides centralized air-conditioning and heating to all parts of the building.
- Provides 8 basement car park spaces that can be multi-purpose space.
- Provides an open office plan, with 8 individual offices for staff, all on one floor.

**Total estimated remaining project need**

**HK \$125 million**

# Our New Church Building











**Congregation Hall**



**3/F Kindergarten**



Entrance Lobby



Recreation Hall